

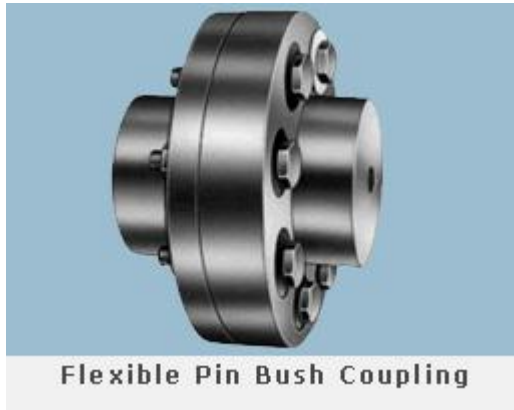


Machinery Motors Flexible Bush Coupling Technical Specifications



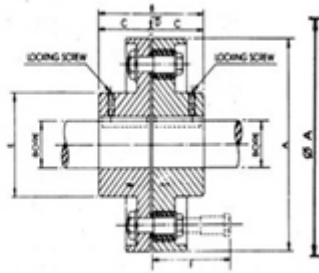
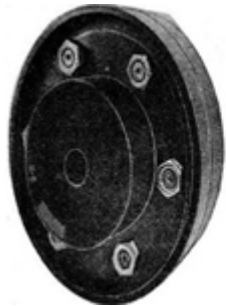
Flexible Coupling Technical Specification PIN BUSH HIC Manufactured UNIVERSAL Brand

Universal Pin Bush Couplings ensures high torque transmissions at high speeds, in a way, coupling have remarkable shock absorption capacity due to construction being cushioned drive type transmitting the torque through rubber bushes, unaffected by water, dust and atmospheric conditions permits drive in either direction requiring no lubrication and no adjustment after fitting.



Flexible Pin Bush Coupling

Shaft Coupling HEAVY MACHINERY Drive Product Specification



Contact For Quote:

HIC INTERNATIONAL CO -Cast Iron Products Flexible Coupling Div

D-136, Shankar Road, New Delhi - 110060, India

Phone: 91-11-6547 2400, 2874 5120

Fax: 91-11-2874 2791

E-mail : universal@hic-india.com; belts@universaldelhi.org

Website : <http://www.rubber-steel-industrial-products.com>

Key personnel : Mr. Anil Gupta, President



Machinery Motors Flexible Bush Coupling Technical Specifications



Coupling Bush Size	No. of Pins	Coupling Min. Bore	Coupling Max Bore	A	B	C	D	E	F	Coupling Drive Torque Kg. M.	Motor Power per 100 REV/MIN KW	Power per 100 REV/MIN H.P.	Drive Max. Speed REV/MIN
1 B	3	12.7	28	95	79	38	3	44	58	7.84	0.81	1.09	6000
2 B	4	12.7	30	114	99	48	3	51	70	31.60	3.29	4.41	5000
2A B	6	16.0	42	130	105	51	3	68	70	52.59	5.47	7.34	4300
3 B	4	16.0	48	160	125	60	5	75	114	63.30	6.59	8.84	3500
4 B	4	20.0	65	191	145	70	5	105	114	84.70	8.81	11.82	2900
4A B	6	20.0	65	191	145	70	5	105	114	126.50	13.17	17.66	2900
5 B	6	25.0	75	225	157	76	5	120	114	169.41	17.65	23.66	2500
6 B	8	45.0	95	254	183	89	5	152	114	240.46	25.05	33.58	2200
6A B	10	45.0	95	254	183	89	5	152	114	298.87	31.13	41.74	2200
6B B	12	45.0	95	254	183	89	5	152	114	360.14	37.51	50.29	2200
7 B	12	45.0	115	290	235	115	5	185	114	423.44	44.11	59.13	1900
7A B	14	60.0	120	300	235	115	5	192	130	529.56	55.17	73.96	1850
8 B	16	65.0	130	310	255	125	5	208	130	592.86	61.76	82.80	1800
8A B	18	65.0	135	340	265	130	5	216	130	740.87	77.18	103.47	1600
8B B	12	70.0	140	360	276	135	6	224	200	889.80	92.70	124.27	1540
9 B	13	80.0	150	390	316	155	6	240	200	1012.43	105.48	141.40	1420
9A B	15	90.0	160	410	336	165	6	256	200	1353.10	140.97	188.98	1350
10 B	16	100.0	170	440	366	180	6	272	200	1469.92	153.15	205.29	1250
10A B	17	110.0	180	480	386	190	6	288	212	1839.95	191.70	256.97	1150
11 B	20	120.0	190	530	406	200	6	305	212	2424.05	252.56	338.55	1030

All dimension in mm

* Coupling Taper Lock also manufactured upto size B7A



Contact For Quote:

HIC INTERNATIONAL CO -Cast Iron Products Flexible Coupling Div

D-136, Shankar Road, New Delhi - 110060, India

Phone: 91-11-6547 2400, 2874 5120

Fax: 91-11-2874 2791

E-mail : universal@hic-india.com; belts@universaldelhi.org

Website : <http://www.rubber-steel-industrial-products.com>

Key personnel : Mr. Anil Gupta, President



Machinery Motors Flexible Bush Coupling Technical Specifications



Bush Coupling Information To Be Supplied With Enquiry or Order

1. Coupling size no. i.e., B1 or B3 & so on.
2. No. of Pins i.e. 3 or 4 & so on.
3. Specific bore size in mm.
4. Pin bush coupling with quick-fit taper bush system required or regular tape.
5. Application details.
6. Quantity in nos.

Disclaimer: Information's, written and verbal are provided by HIC, relative to its products which it determines to be reliable & no liabilities of whatsoever nature in regards to its uses. The purchaser of UNIVERSAL brand industrial products should determine for itself the suitability of such products.



Contact For Quote:

HIC INTERNATIONAL CO -Cast Iron Products Flexible Coupling Div

D-136, Shankar Road, New Delhi - 110060, India

Phone: 91-11-6547 2400, 2874 5120

Fax: 91-11-2874 2791

E-mail : universal@hic-india.com; belts@universaldelhi.org

Website : <http://www.rubber-steel-industrial-products.com>

Key personnel : Mr. Anil Gupta, President